



南通大学杏林学院  
Nantong University Xinglin College

—







"

"

"

"

"

"

"

"

"

"

"

"

"

"

"

"

"

"

"

"

"

"

"

"

"

"

—

—

—

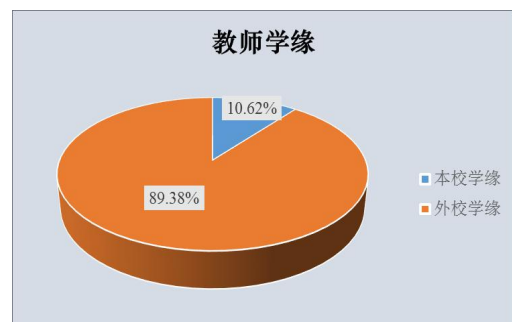
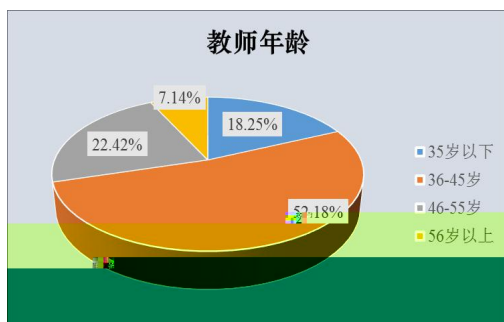
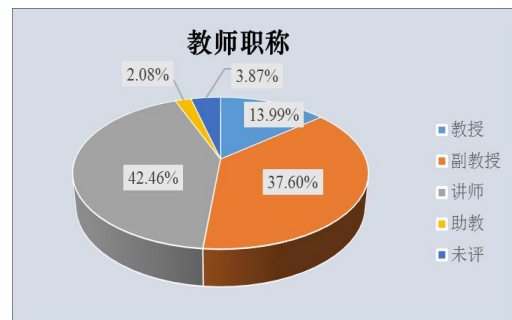
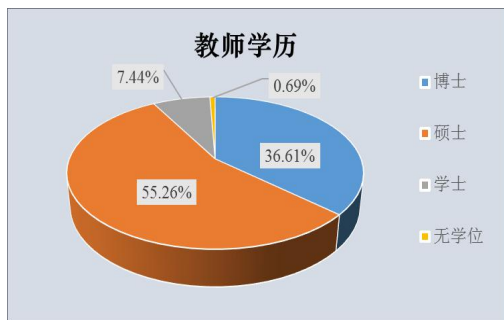
9





1—4 2018							
1838		500	500	281	298	332	17
		1299	1304	285	301	363	16
		240	247	225/170	446	478	51
1516		50	50	285	313	358	28
		45	45	401	404	431	3
		60	60	490	517	551	27
		24	24	486	509	524	23
		36	36	432	456	481	24
		41	41	492	502	517	10
		81	81	458	466	525	8
		55	55	323	323	366	0
		44	44	403	403	486	0
		110	110	345	469	469	124
		20	20	380	416	437	36
		17	17	434	454	492	20
		18	18	428	432	476	4
		5	5	341	349	411	8
		20	20	430	430	449	0
		21	21	436	454	484	18

		79	79	374	406	441	32
		35	35	435	443	457	8
		20	20	375	394	441	19
		40	40	409	415	430	6
		14	14	496	503	520	7
		19	19	447	455	465	8
		44	44	376	377	429	1
		34	34	477	477	516	0
		90	90	379	382	410	3





u

—

—

—

			(%)		(%)		(%)		(%)

—


—



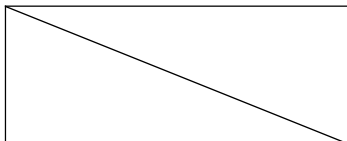

—

—


—



"

"

"

"

“ ”

“ ”

“ ”





	" "			
	" "			
	" "			
	" — "			
	" "			

	" "			

" "

-

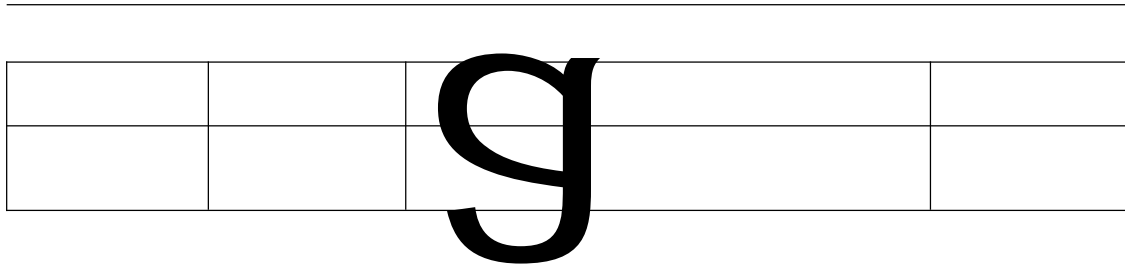
— —

—

—					

—

		Fl anker	
		CRI SPR/Cas9 AB Tu	



—

3

1

PPT

a



—

1		3	50	28	590	21. 07: 1	
2		2	35	19. 5	466	23. 90: 1	
3		7	32	23	418	18. 17: 1	
4		9	19	18. 5	349	18. 86: 1	
5		2	17	10. 5	183	17. 43: 1	
6		0	17	8. 5	181	21. 29: 1	
7		3	13	9. 5	180	18. 95: 1	
8		2	13	8. 5	177	20. 82: 1	
9		7	10	12	220	18. 33: 1	
10		2	8	6	75	12. 50: 1	
11		4	20	14	290	20. 71: 1	
12		1	21	11. 5	246	21. 39: 1	
13		2	26	15	285	19. 00: 1	
14		2	9	6. 5	85	13. 08: 1	
15		2	16	10	200	20. 00: 1	
16		4	16	12	224	18. 67: 1	
17		5	27	18. 5	393	21. 24: 1	
18		6	21	16. 5	382	23. 15: 1	
19		7	14	14	272	19. 43: 1	
20		9	19	18. 5	421	22. 76: 1	
21		8	28	22	461	20. 95: 1	
22		6	10	11	211	19. 18: 1	
23		1	15	8. 5	160	18. 82: 1	
24		9	30	24	460	19. 17: 1	
25		9	36	27	556	20. 59: 1	
26		6	36	24	494	20. 58: 1	
27		3	16	11	215	19. 55: 1	
28		7	19	16. 5	300	18. 18: 1	
29		1	27	14. 5	264	18. 21: 1	
30		6	30	21	384	18. 29: 1	
31		3	18	12	234	19. 50: 1	
32		5	10	10	181	18. 10: 1	
33		5	15	12. 5	244	19. 52: 1	

34		10	12	16	279	17. 44: 1	
35		1	13	7. 5	150	20. 00: 1	
36		3	18	12	243	20. 25: 1	
37		2	8	6	69	11. 50: 1	
38		3	16	11	183	16. 64: 1	
39		7	20	17	292	17. 18: 1	
40		3	10	8	144	18. 00: 1	
41		24	154	101	2008	19. 88: 1	
42		3	15	10. 5	226	21. 52: 1	
43		5	35	22. 5	534	23. 73: 1	
44		2	6	5	85	17. 00: 1	
45		2	22	13	276	21. 23: 1	
46		3	10	8	124	15. 50: 1	
47							2019 8
48							

—

1		20	20	100%	
2		13	13	100%	
3		5	5	100%	
4		3	3	100%	
5		7	7	100%	
6		6	6	100%	
7		2	2	100%	
8		4	4	100%	
9		6	6	100%	
10		5	5	100%	
11		3	3	100%	
12		5	5	100%	
13		1	1	100%	
14		2	2	100%	
15		2	2	100%	
16		1	1	100%	
17		7	7	100%	

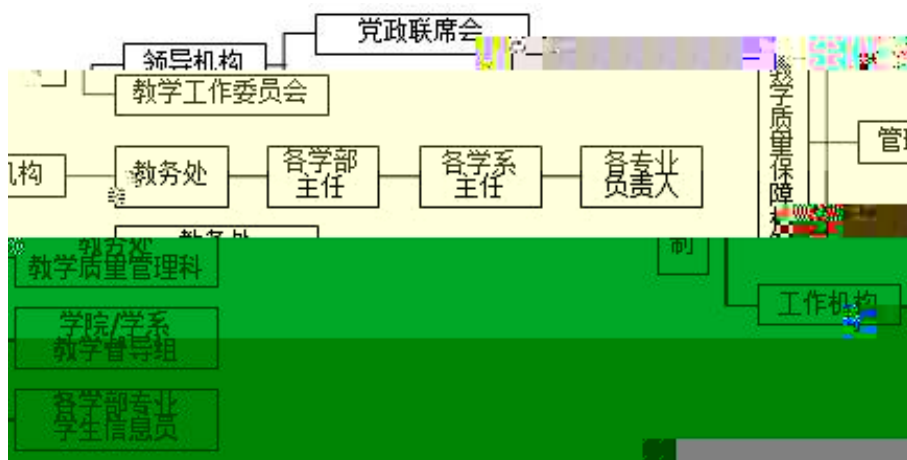
18		7	7	100%	
19		7	7	100%	
20		6	6	100%	
21		5	5	100%	
22		7	7	100%	
23		1	1	100%	
24		7	7	100%	
25		4	4	100%	
26		5	5	100%	
27		4	4	100%	
28		4	4	100%	
29		3	3	100%	
30		6	6	100%	
31		9	9	100%	
32		3	3	100%	
33		4	4	100%	
34		3	3	100%	
35		7	7	100%	
36		3	3	100%	
37		4	4	100%	
38		2	2	100%	
39		11	11	100%	
40		13	13	100%	
41		23	23	100%	
42		7	7	100%	
43		14	14	100%	
44		3	3	100%	
45		11	11	100%	
46		11	11	100%	
47					2019 8
48					











—

—

“

”

"

"

‡FJWÇ-L' ~ f -

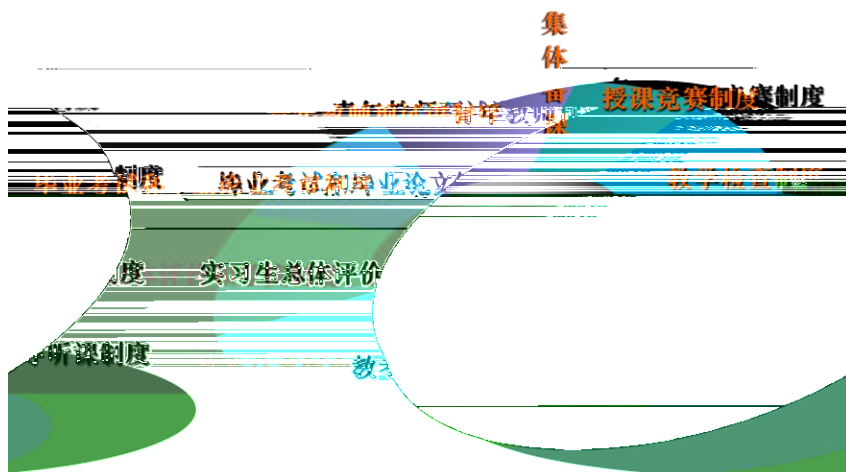
‡FJWÇ-L' ~ f -

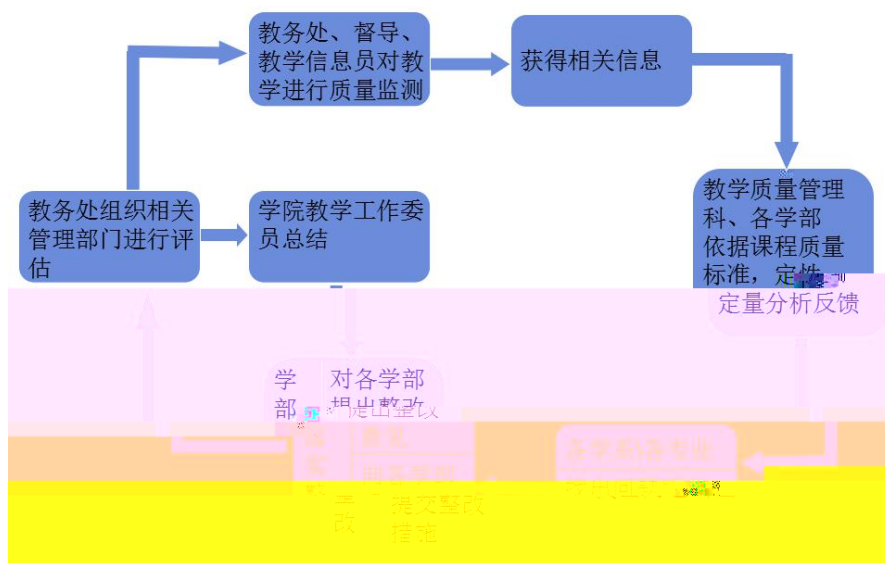
‡FJWÇ-L' ~ f -1Ñ6<sup>2\*6</sup> ú

‡FJWÇ-L' ~ f -+O @+c1 C<

‡FJWÇ-L' ~ f - Î #ÄB

"





—

/					

—

/

—

/






	(%)	(%)	(%)	(%)
	89.37%	10.24%	0.26%	0.13%
	87.94%	10.93%	1.01%	0.12%
	90.85%	6.75%	2.19%	0.21%
	88.00%	8.65%	3.14%	0.21%
	88.84%	8.69%	2.23%	0.24%

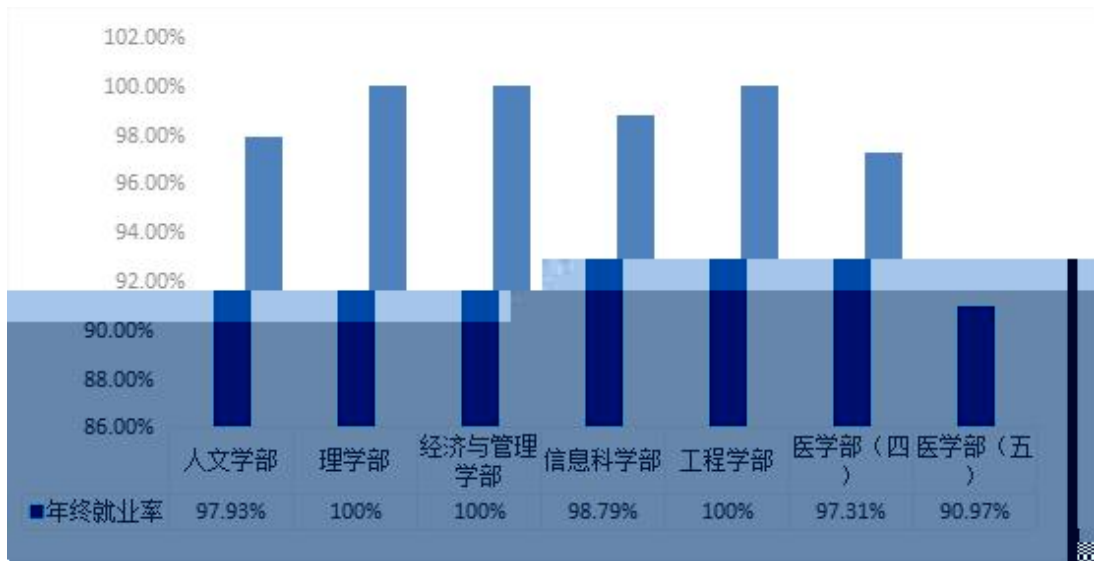
	88.09%	10.74%	1.04%	0.13%
	89.18%	9.50%	1.19%	0.13%
	87.96%	8.68%	3.14%	0.22%
	88.47%	9.95%	1.45%	0.13%
	88.49%	9.94%	1.45%	0.12%
	87.99%	10.28%	1.50%	0.23%
	87.97%	10.64%	1.18%	0.21%

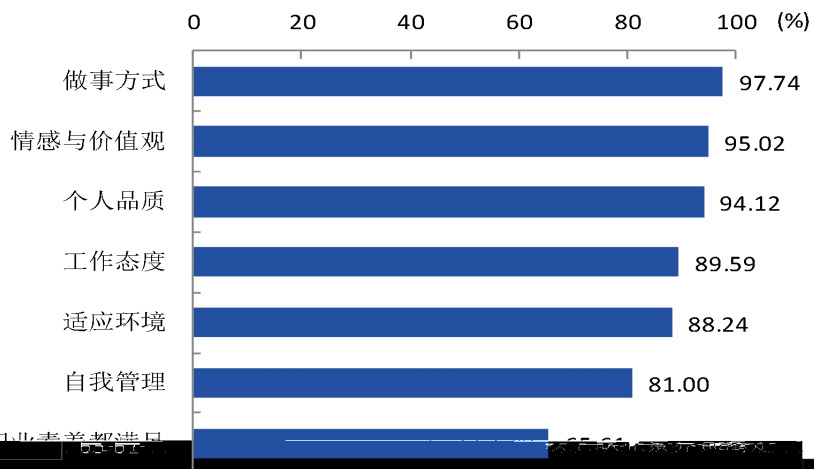
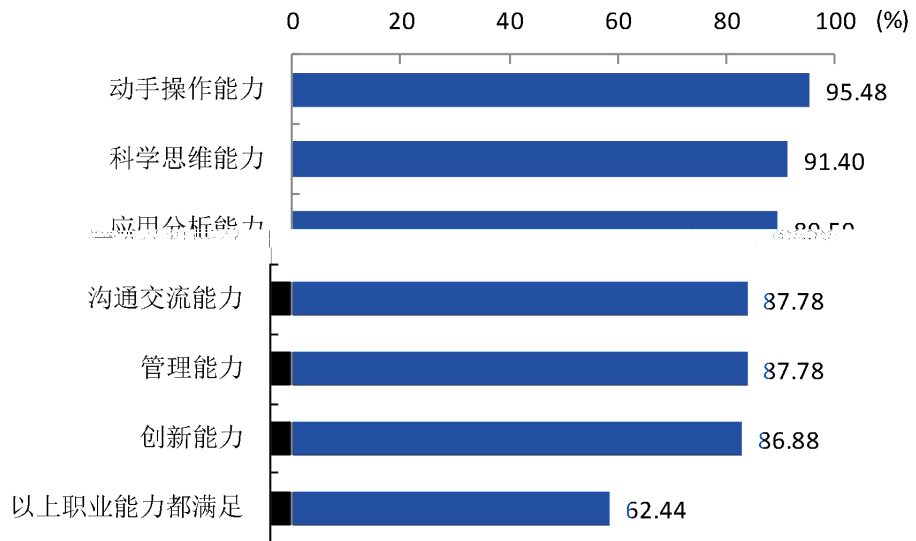
"

"

—

—



" "

" "

"

" " "

" "

" "

" "

" "

"

"

"

"

"

"

"

"

"

"

"

"

"

"

"

"

"

"

"

"

"

"

"

"





